

Web Design

Handout - Links



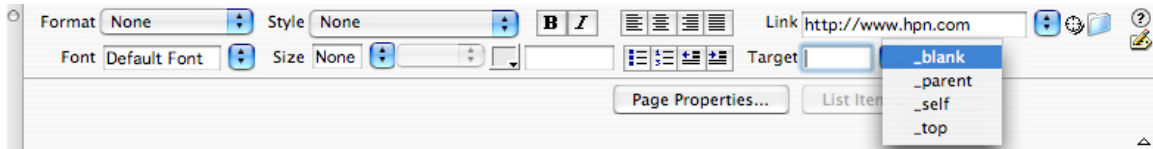
Links, Link Targets, Image Maps and Anchors

Links

There are four types of links:

1. external – out of your site e.g. <http://www.google.com>
2. internal – to another page or place on a page within your site e.g. [contact.html](#)
3. email – will open the user's email application and send an email e.g. <mailto:dnoffs@colum.edu>
4. null link – links to nowhere, but allows behaviors (use #)

Link Targets



A target tells the link WHERE to open the new document, either in the existing window, a frame within the window or in a new window.

Type (Browse or drag) to make the link

Open the Target drop down menu

`_blank` loads the page into a new browser window.

`_self` loads the page into the current window.

`_parent` loads the page into the frame that is superior to the frame the hyperlink is in.

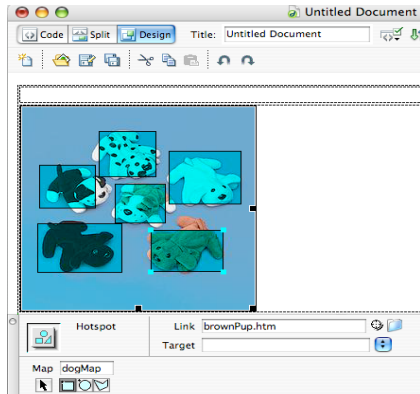
`_top` cancels all frames, and loads in full browser window.

Web Design

Handout - Links

Image maps

Are invisible fields on areas of an image that can be links.
To create them, click on an image and use the tools at the bottom left of the image property inspector



anchors

These link to places, paragraphs, images etc. within a webpage
Give a name to the anchor point using the anchor tool in the common insert menu. To link to the anchor from anywhere else on the web page simply type into the link field, #thenameoftheanchorpoint (for example #top)

