

Setting up your site in Dreamweaver CS 5.5

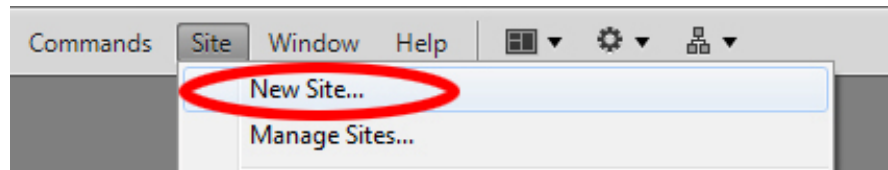
Step 1

Make a new folder on your USB drive (or on your desktop) and give the folder a name, such as “My Class Website”



Step 2

At the top, select
Site > New Site...

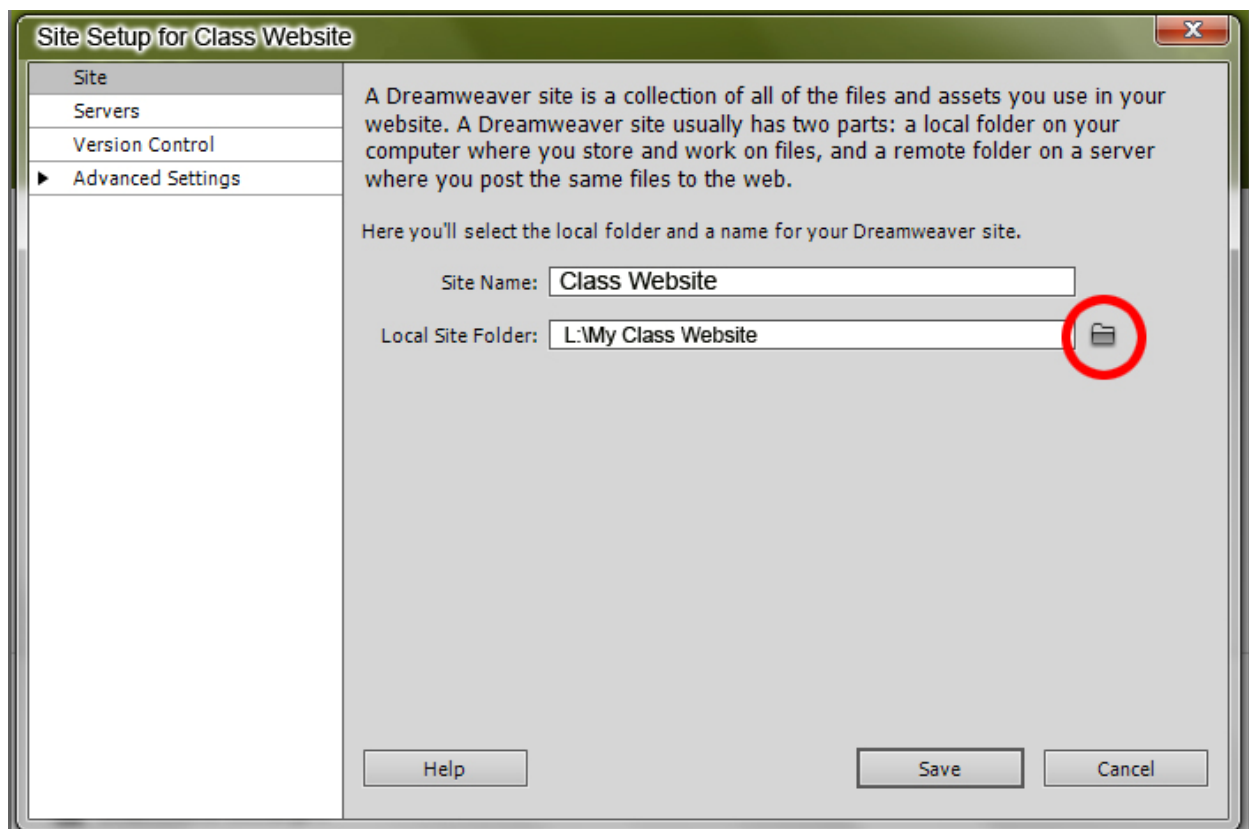


Step 3

Type in the “Site Name” of your website – it can be the same as your folder name, if you wish

Step 4

Select the “Local Root Folder” by clicking on that little folder icon to the right

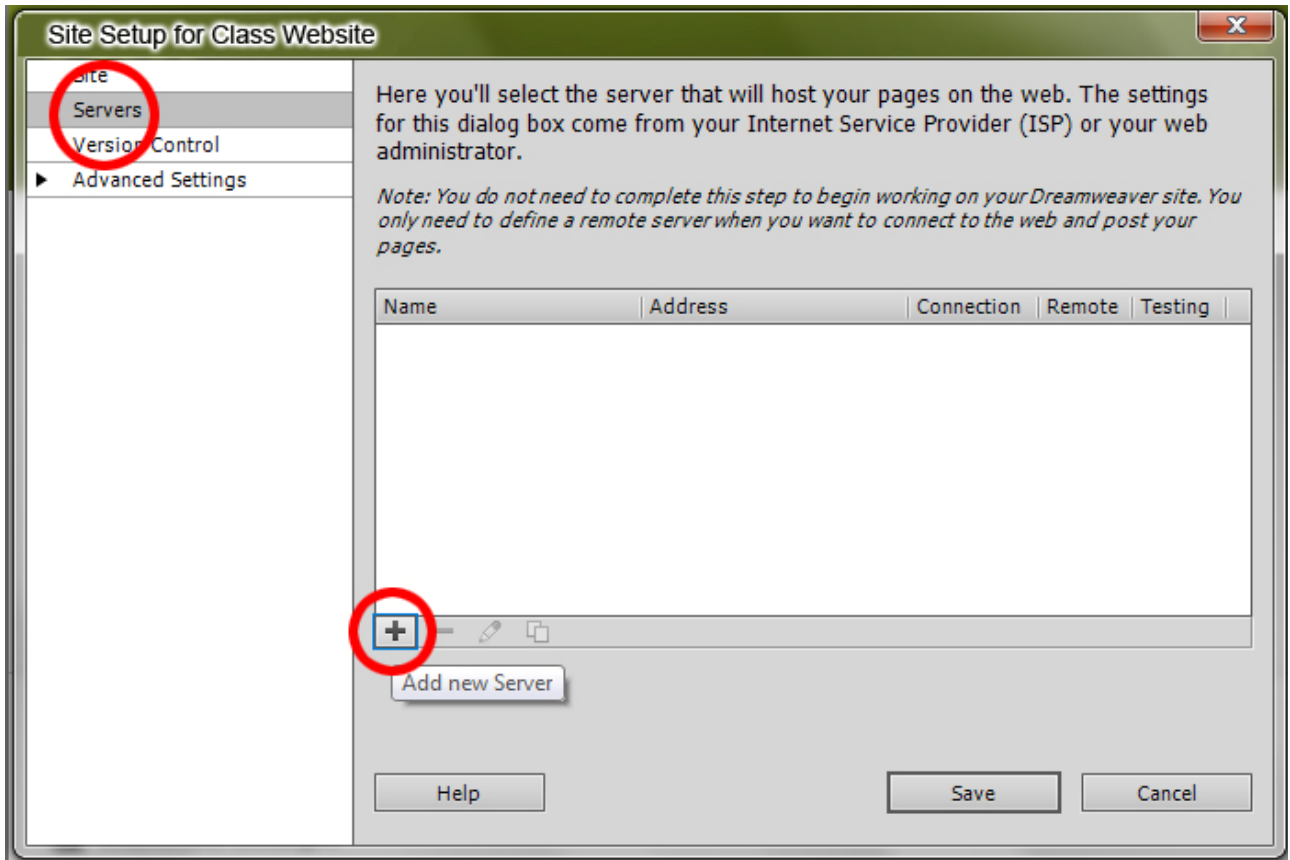


- If you are NOT putting this website on a server, you can click SAVE.
- Otherwise, DO NOT click SAVE – continue on to Step 5.

Step 5

Select "Servers" in the left-hand column of the Site Setup Window.

Then, click on the + symbol to add a server to your website.



Step 6

Type in the following information as shown in the screenshot below.

Server Name: IAM Server

FTP Address: iam.colum.edu

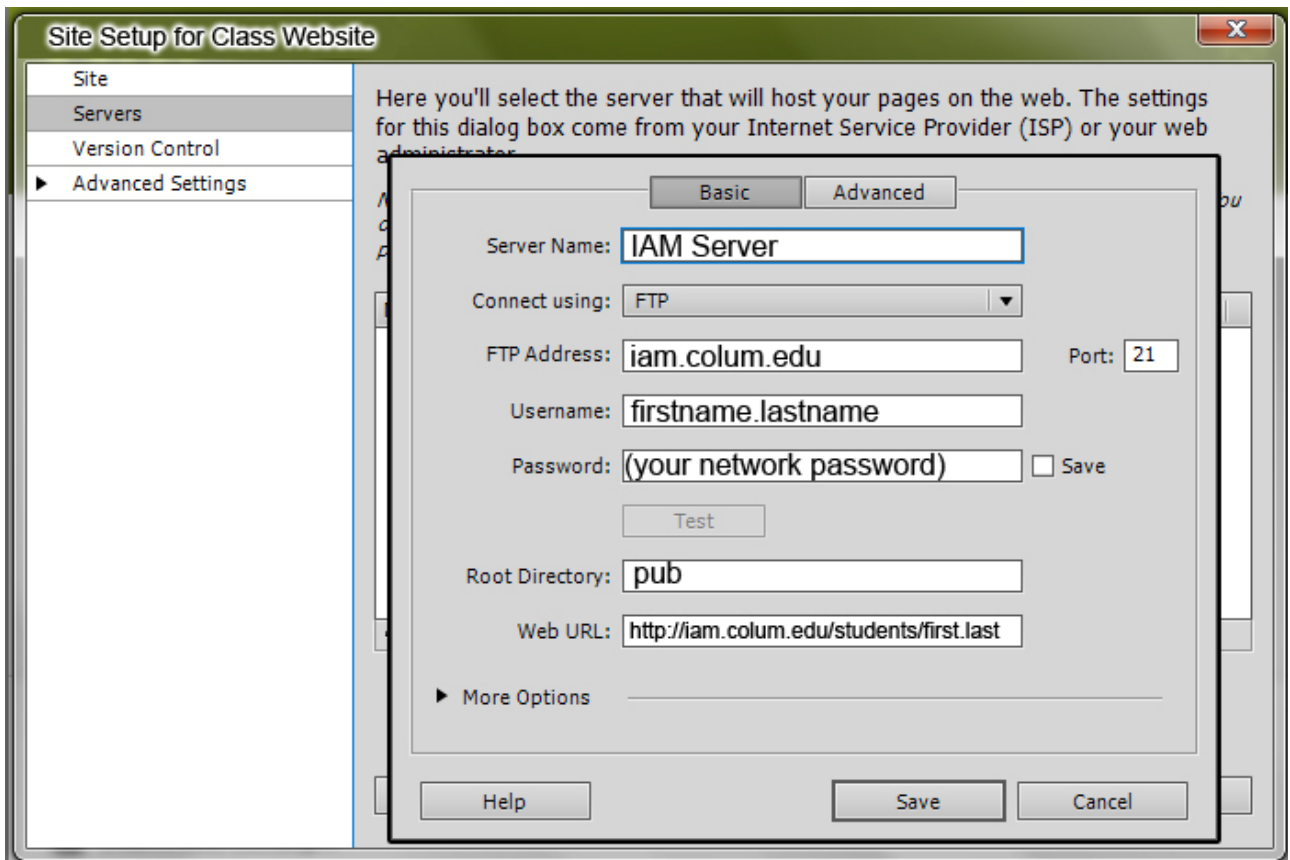
Username: The same Username that you use to log into the computers in this class (first.last)

Password: The same password that you use to log into the computers in this class.

Root Directory: pub

Web URL: http://iam.colum.edu/students/first.last

- Substitute first and last for your first name and last name, all lowercase
- NOTE: Sometimes Dreamweaver puts "pub" in the URL path. Please remove "pub" from the URL



DO NOT CLICK SAVE YET—there is one more step.

Step 7

A – Click on “More Options”

B- Check “Use Passive FTP”

C – Click on the Test Button

- If you get an error message, make sure that all of your information is typed in correctly.

D- Click Save

Click Save again, and you are ready to start building your website!

The image shows a dialog box for configuring an FTP server. It has two tabs: "Basic" and "Advanced". The "Basic" tab is selected. The fields are as follows:

- Server Name: IAM Server
- Connect using: FTP
- FTP Address: iam.colum.edu
- Port: 21
- Username: firstname.lastname
- Password: (your network password)
- Save checkbox: unchecked
- Test button: circled in red with a red 'C' next to it.
- Root Directory: pub
- Web URL: http://iam.colum.edu/students/first.last

Below the fields is a section titled "More Options" with a dropdown arrow circled in red and labeled 'A'. The options are:

- Use Passive FTP: checked checkbox, circled in red with a red 'B' next to it.
- Use IPV6 Transfer Mode: unchecked checkbox.
- Use Proxy, as defined in Preferences: unchecked checkbox.
- Use FTP performance optimization: checked checkbox. Below it is the text: "Deselect this option if Dreamweaver cannot connect to your server."
- Use alternative FTP move method: unchecked checkbox. Below it is the text: "Select this option if you get errors either when rollbacks are enabled or when moving files."

At the bottom of the dialog box are three buttons: "Help", "Save", and "Cancel". The "Save" button is circled in red with a red 'D' next to it.